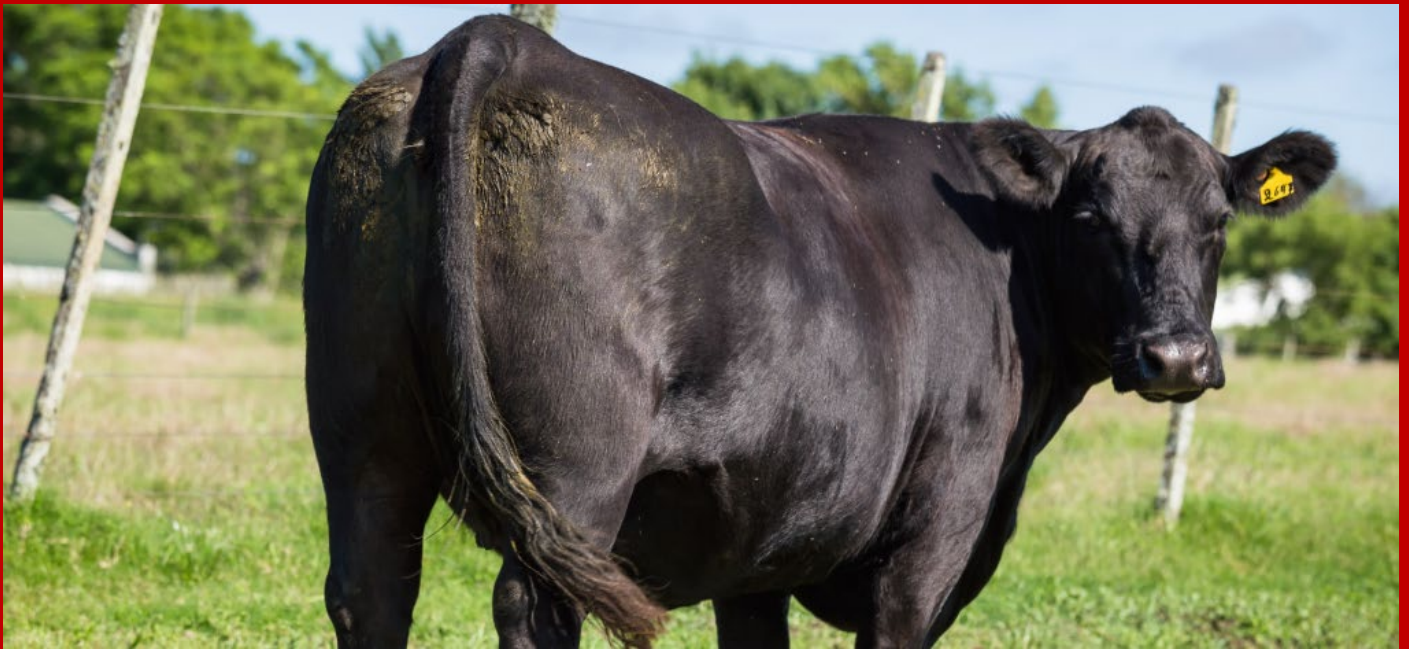


ANGUS



VAQUILLONAS PI y SA PREÑADAS

En el marco de la Expo Florida

Viernes 24 de Abril 2026



Zambrano & Cía.

1^{era} Empresa Nacional de Servicios Agropecuarios

ANGUS



PRESENCIAL

Trío PEDIGREE Preñado

RP -HBU	Nombre (Padre, Madre, Abuelo Materno)								FN KG al 6/4	Servicio	Apuntes
5187 240394	MODELO D. WIDE /5187 TE								01.10.2024 542 kgs.	TORO 4843 SERV 13/11/25 FPP 24.08.26 +-	
	P SAV DOUBLE WIDE 0861										
	M RP 3738										
	AM CONCE 563 HECHO BIENHECHO										
	PN	PD	18M	HL	AOB	EGS	MARB	CE			
0.8	20	20.2	-2.9	-0483	0.12	0.128	0.3				
5190 240397	MODELO D. WIDE /5190 TE								02.10.2024 555 kgs.	TORO 4843 SERV 05/11/25 FPP 16/08/26+-	
	P SAV DOUBLE WIDE 0861										
	M RP 2319										
	AM MACEDO GAUCHO TE										
	PN	PD	18M	HL	AOB	EGS	MARB	CE			
1	23.5	24.5	-3.7	-0.098	0.159	0.114	0.6				
5191 240398	MODELO D. WIDE /5191 TE								02.10.2024 530 kgs.	TORO 4843 SERV 12/11/25 FPP 23.08.26 +-	
	P SAV DOUBLE WIDE 0861										
	M RP 2319										
	AM MACEDO GAUCHO TE										
	PN	PD	18M	HL	AOB	EGS	MARB	CE			
0.8	16.7	27	-0.9	0.52	0.159	0.079	1				

ANGUS



PRESENCIAL

Trio PURO CONTROLADO Preñado

RP -HBU	Nombre (Padre, Madre, Abuelo Materno)	FN KG al 6/4	Servicio	Apuntes																
1744 75825	MODELO SA / 1744	12.08.2024 480 kgs.	TORO 4843 SERV 05/01/26 FPP 16/10/26+-																	
	P MOROCHA RAINFALL 201 TE / 106																			
	M RP 1656																			
	AM CONCE 549 BLUE MOON																			
	<table border="1"><thead><tr><th>PN</th><th>PD</th><th>18M</th><th>HL</th><th>AOB</th><th>EGS</th><th>MARB</th><th>CE</th></tr></thead><tbody><tr><td>1.1</td><td>25</td><td>30.1</td><td>-4.1</td><td>0.843</td><td>-0.014</td><td>0.027</td><td>0.3</td></tr></tbody></table>	PN	PD	18M	HL	AOB	EGS	MARB	CE	1.1	25	30.1	-4.1	0.843	-0.014	0.027	0.3			
PN	PD	18M	HL	AOB	EGS	MARB	CE													
1.1	25	30.1	-4.1	0.843	-0.014	0.027	0.3													
1745 75826	MODELO SA / 1745	13.08.2024 470 kgs.	TORO 4843 SERV 05/01/26 FPP 16/10/26+-																	
	P MOROCHA RAINFALL 201 TE / 106																			
	M RP 1654																			
	AM MODELO GENERAL 2718 TE																			
	<table border="1"><thead><tr><th>PN</th><th>PD</th><th>18M</th><th>HL</th><th>AOB</th><th>EGS</th><th>MARB</th><th>CE</th></tr></thead><tbody><tr><td>1.1</td><td>19.5</td><td>30.9</td><td>-0.7</td><td>2.239</td><td>0.041</td><td>-0.004</td><td>0.7</td></tr></tbody></table>	PN	PD	18M	HL	AOB	EGS	MARB	CE	1.1	19.5	30.9	-0.7	2.239	0.041	-0.004	0.7			
PN	PD	18M	HL	AOB	EGS	MARB	CE													
1.1	19.5	30.9	-0.7	2.239	0.041	-0.004	0.7													
1751 75832	MODELO SA / 1751	11.09.2024 449 kgs.	TORO 4843 SERV 16/03/26 FPP 25/12/26+-																	
	P MOROCHA RAINFALL 201 TE / 106																			
	M RP 1521																			
	AM MODELO CONDOR 2499																			
	<table border="1"><thead><tr><th>PN</th><th>PD</th><th>18M</th><th>HL</th><th>AOB</th><th>EGS</th><th>MARB</th><th>CE</th></tr></thead><tbody><tr><td>0.8</td><td>18.3</td><td>28.6</td><td>0.3</td><td>1.882</td><td>0.055</td><td>0.025</td><td>0.6</td></tr></tbody></table>	PN	PD	18M	HL	AOB	EGS	MARB	CE	0.8	18.3	28.6	0.3	1.882	0.055	0.025	0.6			
PN	PD	18M	HL	AOB	EGS	MARB	CE													
0.8	18.3	28.6	0.3	1.882	0.055	0.025	0.6													

ANGUS



VIRTUAL

8 Vacas PI Preñadas (entore del 15/11 al 20/01/26)

RP -HBU	Nombre (Padre, Madre, Abuelo Materno)	FN	Servicio	Apuntes												
045 158669	GREGORIO 045 YESQUERO/2683	20.08.2017	VACIA													
	P TRES MARIAS 8189 YESQUERO TE															
	M RP 2683															
	AM PASTORIZA 565 BRIGADIER TE															
	<table border="1"><thead><tr><th>PN</th><th>PD</th><th>18M</th><th>HL</th><th>AOB</th><th>EGS</th><th>MARB</th><th>CE</th></tr></thead><tbody><tr><td>1.1</td><td>18</td><td>22.2</td><td>-4.1</td><td>0.748</td><td>-0.101</td><td>-0.011</td><td>0.2</td></tr></tbody></table>				PN	PD	18M	HL	AOB	EGS	MARB	CE	1.1	18	22.2	-4.1
PN	PD	18M	HL	AOB	EGS	MARB	CE									
1.1	18	22.2	-4.1	0.748	-0.101	-0.011	0.2									
080 163161	GREGORIO 080 2681/BRUTAL	25.11.2017	PREÑADA TORO 1348													
	P TRANQUERAS 289 BRIG BRUTAL TE															
	M RP 2861															
	AM RUBETA 4444 QUEBRANTADOR TE															
	<table border="1"><thead><tr><th>PN</th><th>PD</th><th>18M</th><th>HL</th><th>AOB</th><th>EGS</th><th>MARB</th><th>CE</th></tr></thead><tbody><tr><td>1</td><td>11.8</td><td>10.5</td><td>-6.5</td><td>-0.652</td><td>-0.177</td><td>-0.042</td><td>0.8</td></tr></tbody></table>				PN	PD	18M	HL	AOB	EGS	MARB	CE	1	11.8	10.5	-6.5
PN	PD	18M	HL	AOB	EGS	MARB	CE									
1	11.8	10.5	-6.5	-0.652	-0.177	-0.042	0.8									
2098 191249	LR2098	24.08.2020	PREÑADA TORO 4820													
	P VETERANO 050 SCOTCH 09															
	M RP 1578															
	AM LR 424 JOSE															
	<table border="1"><thead><tr><th>PN</th><th>PD</th><th>18M</th><th>HL</th><th>AOB</th><th>EGS</th><th>MARB</th><th>CE</th></tr></thead><tbody><tr><td>0.1</td><td>14.7</td><td>15</td><td>-0.5</td><td>-0.03</td><td>0.105</td><td>0.094</td><td>-0.4</td></tr></tbody></table>				PN	PD	18M	HL	AOB	EGS	MARB	CE	0.1	14.7	15	-0.5
PN	PD	18M	HL	AOB	EGS	MARB	CE									
0.1	14.7	15	-0.5	-0.03	0.105	0.094	-0.4									
3944 177330	MODELO FULL CHARGE/3944 TE	02.06.2019	PREÑADA TORO 201													
	P MOHNEN RECHARGE 2336															
	M RP 618															
	AM RUBETA 4980 BOMBAZO TE															
	<table border="1"><thead><tr><th>PN</th><th>PD</th><th>18M</th><th>HL</th><th>AOB</th><th>EGS</th><th>MARB</th><th>CE</th></tr></thead><tbody><tr><td>1.1</td><td>15.8</td><td>23.7</td><td>0.2</td><td>0.675</td><td>0.023</td><td>0.046</td><td>0.5</td></tr></tbody></table>				PN	PD	18M	HL	AOB	EGS	MARB	CE	1.1	15.8	23.7	0.2
PN	PD	18M	HL	AOB	EGS	MARB	CE									
1.1	15.8	23.7	0.2	0.675	0.023	0.046	0.5									
4159 187213	MODELO EURO 4159 TE	28.04.2020	PREÑADA TORO 1348													
	P ERRE TE 383 CONDOR EURO TE															
	M RP 6207															
	AM SAV BISMARCK 5682															
	<table border="1"><thead><tr><th>PN</th><th>PD</th><th>18M</th><th>HL</th><th>AOB</th><th>EGS</th><th>MARB</th><th>CE</th></tr></thead><tbody><tr><td>1.2</td><td>23.3</td><td>22.9</td><td>-4.2</td><td>0.899</td><td>0.002</td><td>0.046</td><td>0.4</td></tr></tbody></table>				PN	PD	18M	HL	AOB	EGS	MARB	CE	1.2	23.3	22.9	-4.2
PN	PD	18M	HL	AOB	EGS	MARB	CE									
1.2	23.3	22.9	-4.2	0.899	0.002	0.046	0.4									

ANGUS



RP -HBU	Nombre (Padre, Madre, Abuelo Materno)	FN	Servicio	Apuntes												
4207 188018	MODELO RUBETA 4207 TEI	19.08.2020	PREÑADA TORO 4868													
	P RED U-2 RECON 192Y															
	M															
	AM RUBETA 4444 QUEBRANTADOR TE															
	<table border="1"> <thead> <tr> <th>PN</th> <th>PD</th> <th>18M</th> <th>HL</th> <th>AOB</th> <th>EGS</th> <th>MARB</th> <th>CE</th> </tr> </thead> <tbody> <tr> <td>0.5</td> <td>14.8</td> <td>24.5</td> <td>1</td> <td>0.713</td> <td>-0.069</td> <td>-0.025</td> <td>0.5</td> </tr> </tbody> </table>				PN	PD	18M	HL	AOB	EGS	MARB	CE	0.5	14.8	24.5	1
PN	PD	18M	HL	AOB	EGS	MARB	CE									
0.5	14.8	24.5	1	0.713	-0.069	-0.025	0.5									
4321 196176	MODELO M. 3367/4321 RED	10.02.2021	PREÑADA TORO 1348													
	P MODELO M. MAXIMO 3367 RED TE															
	M RP 2374															
	AM MODELO DOC HOLLYDAY/2056 RED TE															
	<table border="1"> <thead> <tr> <th>PN</th> <th>PD</th> <th>18M</th> <th>HL</th> <th>AOB</th> <th>EGS</th> <th>MARB</th> <th>CE</th> </tr> </thead> <tbody> <tr> <td>1.2</td> <td>20.5</td> <td>23.1</td> <td>-2.6</td> <td>1.944</td> <td>0.002</td> <td>0.004</td> <td>1</td> </tr> </tbody> </table>				PN	PD	18M	HL	AOB	EGS	MARB	CE	1.2	20.5	23.1	-2.6
PN	PD	18M	HL	AOB	EGS	MARB	CE									
1.2	20.5	23.1	-2.6	1.944	0.002	0.004	1									
4630 210500	MODELO RUBETA 4630 TE	08.07.2022	PREÑADA TORO 201													
	P MODELO RUBETA 3886 TEI															
	M RP 3607															
	AM DON APARICIO SERRUCHO 57 MAXI TE															
	<table border="1"> <thead> <tr> <th>PN</th> <th>PD</th> <th>18M</th> <th>HL</th> <th>AOB</th> <th>EGS</th> <th>MARB</th> <th>CE</th> </tr> </thead> <tbody> <tr> <td>1.5</td> <td>20</td> <td>19</td> <td>-4.8</td> <td>1.014</td> <td>-0.055</td> <td>-0.024</td> <td>-0.1</td> </tr> </tbody> </table>				PN	PD	18M	HL	AOB	EGS	MARB	CE	1.5	20	19	-4.8
PN	PD	18M	HL	AOB	EGS	MARB	CE									
1.5	20	19	-4.8	1.014	-0.055	-0.024	-0.1									

20 Vaquillonas SA Preñadas

Fecha de Entore: 10/11/25 al 23/01/26

Toro: RP 121 y RP 128

REFERENCIA DE PADRES

- * 4843- MODELO VIRREY
- * RP 121 AZUL INSIGHT 121
- * RP 128 AZUL ALCAPONE 128
- * 1348. SIERRA MADERA GÉNESIS 1348 TE FIV
- * 4820 MODELO BIEN HECHO 563/4820 TE
- * RP 201 MOROCHA RAINFALL 201 TE/106
- * 4868 "MALAMBO" MODELO RED BLOOD /4868 RED TE